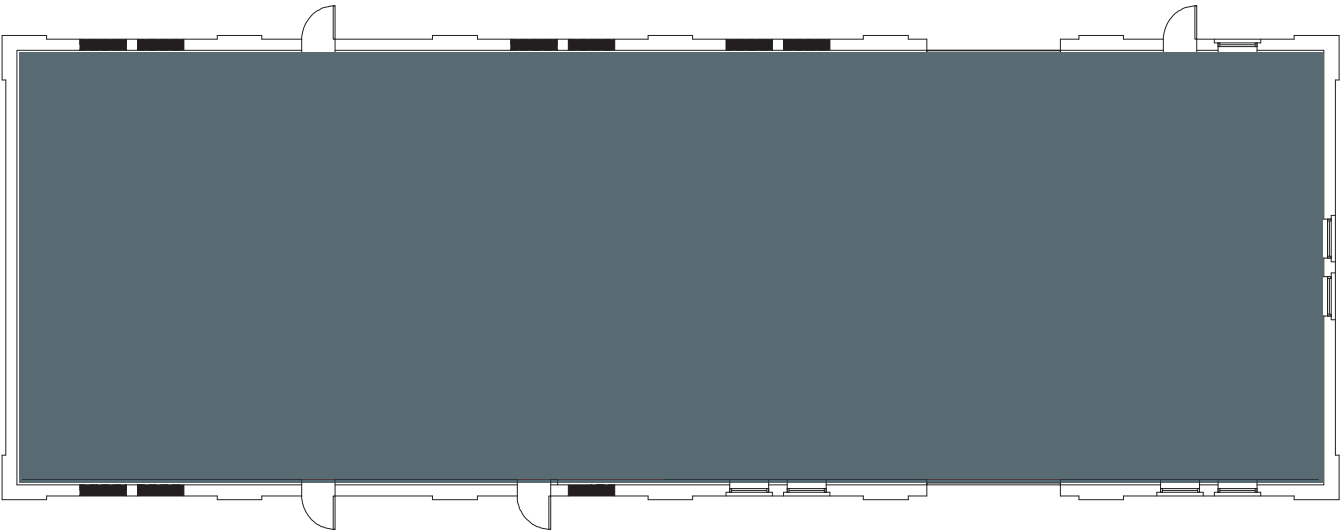




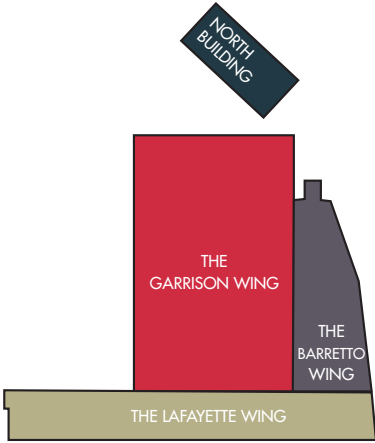
# NORTH WING

FULL BUILDING | N100 | 5,000 RSF



The North Wing is best suited for a combination of food and retail users with its direct access to the BankNote's outdoor plaza. This highly visible location has substantial foot traffic from building tenants and visitors.

■ AVAILABLE



**Greg Smith**  
President  
212.445.1200 | [greg.smith@jrtrealty.com](mailto:greg.smith@jrtrealty.com)

**Ellen Israel**  
Senior Director  
212.445.1200 | [ellen.israel@jrtrealty.com](mailto:ellen.israel@jrtrealty.com)

**Kristen Morgan**  
Director  
212.445.1200 | [kristen.morgan@jrtrealty.com](mailto:kristen.morgan@jrtrealty.com)

[TheBankNoteNYC.com](http://TheBankNoteNYC.com)



Floorplans were prepared by the architect for The BankNote. All dimensions are approximate and subject to normal construction variances and tolerances. Plans and dimensions may contain minor variations from floor to floor. All square footage calculations are based on gross measurements and are approximate.